



TIRE PROTECTION CHAINS



2021 VOL.5
CATALOG

EXCLUSIVE DISTRIBUTOR
OTRUSA WWW.OTRUSA.COM
INFO@OTRUSA.COM



DESIGNED AND ENGINEERED
IN THE USA

TOLL FREE : +1-855-687-8721

RECENT INSTALLS



6 FACTS ABOUT TOUGH CHAINS



80 PCS ADDITIONAL PARTS
ALWAYS INCLUDED FREE.
VALUE TO THE CUSTOMER
UP TO \$3,000.



TALLEST SIDEWALL
PROTECTION IN THE MARKET.
WE GOT YOU COVERED 100%.
"DO IT RIGHT OR DON'T DO IT."



BEST SERVICE PRACTICES.
NOT ONLY DO WE INSTALL BUT
WE ALSO TEACH YOUR TEAM TO
BECOME MORE EFFICIENT
IN A SAFER WAY.



WE KEEP THE COST DOWN FOR
YOU. TOUGH IS THE BEST
COST/HOUR IN THE MARKET.
FROM ACQUISITION COST
TO MAINTENANCE.
"A PROMISE IS A PROMISE."



NET REPLACEMENT SYSTEM (NRS)
ALL TOUGH CHAINS ARE NRS READY.
WHEN WORN, WE REPLACE ONLY
THE NET AND KEEP THE SIDEWALLS
TO SAVE AN EXTRA 30%.



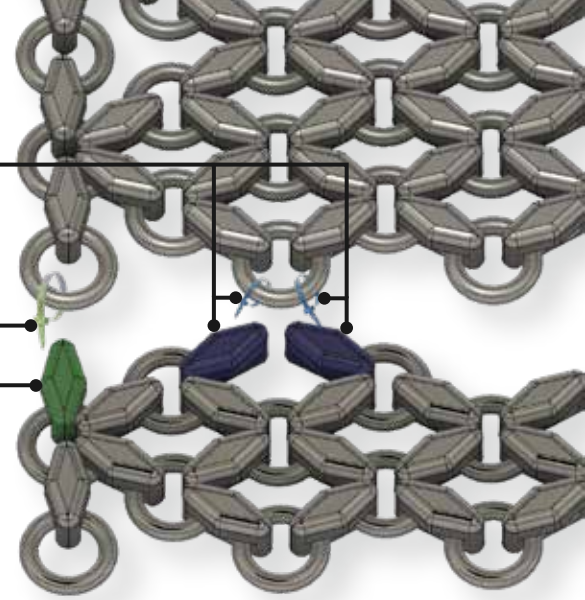
TOUGH RUNNING HOURS
GUARANTEE. WE ALWAYS
MATCH OR EXCEED ANY
GUARANTEE OF COMPARABLE
CHAINS.

SMART MARKING

FASTER IDENTIFICATION
EASIER MOUNTING

BLUE ZIP TIE
TO
BLUE LINK

GREEN ZIP TIE
TO
GREEN LINK



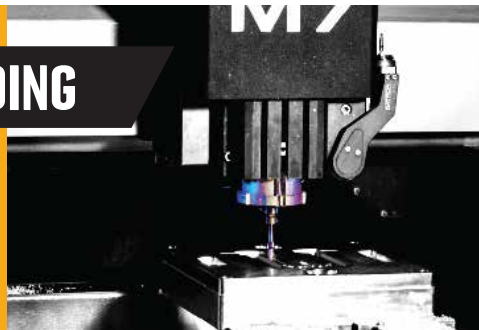
FORGING & WELDING



- Drop forged machinery
- HEAT TREATMENT FOR BETTER WEAR
- HIGH-END WELDING TECHNOLOGY

CNC MOLDING

IN-HOUSE CNC
MOLD CAPABILITY



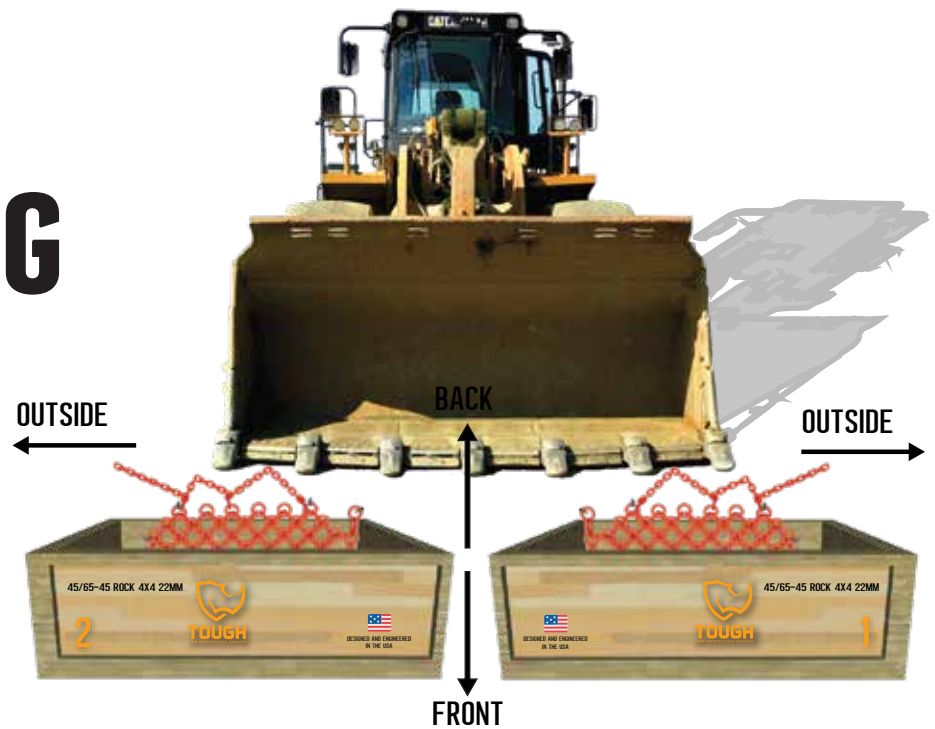
QUALITY CONTROL

- EVERY CHAIN IS TESTED
- TENSILE STRENGTH
 - CORE AND SURFACE HARDNESS

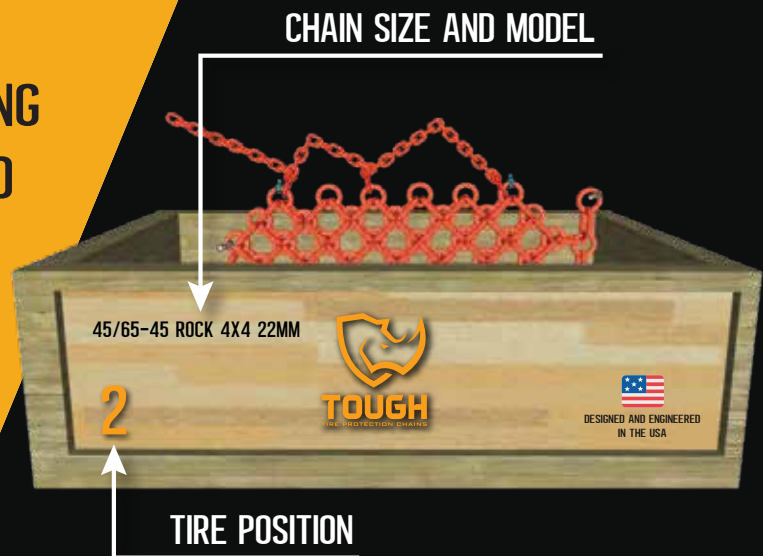


SMART PACKAGING

SMART PACKAGING



- CRATE IDENTIFIED BY TIRE POSITION
- CHAIN READY FOR LIFTING
- TENSION CHAIN MOUNTED
- CLEAR INSTRUCTIONS FOR QUICK LAYOUT



- 1 BOX TOOLS
- 1 BOX MOUNTING PARTS
- 1 BOX SPARE PARTS

3 STYLES APPLICATIONS

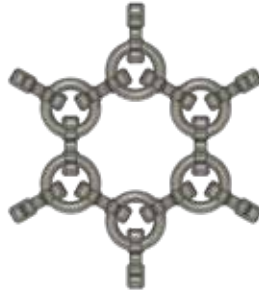
4X4

100% PROTECTION



6X6

50% PROTECTION 50% TRACTION



10X10

100% TRACTION



SIZE

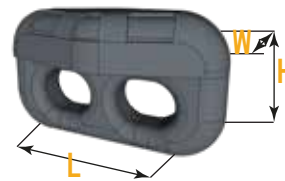
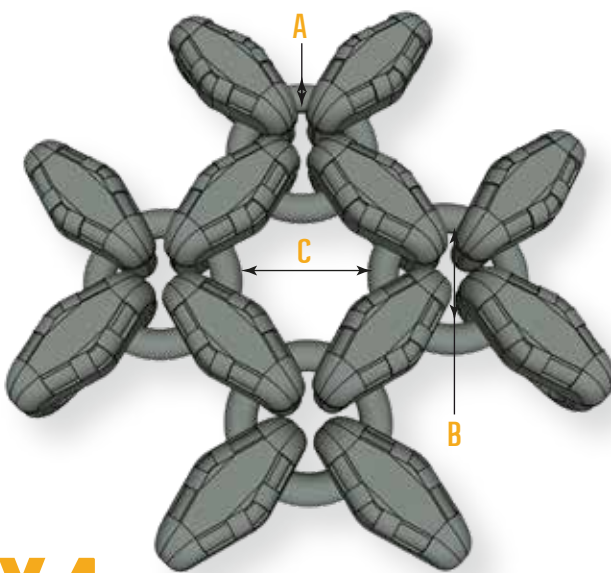
STEEL GRADE SELECTION FOR EACH APPLICATION

25"	17.5-25
	20.5-25
	23.5-25
	26.5-25
	29.5-25
29"	29.5-29
33"	35/65-33

39"	40/65-39
	41.25/70-39
	45/65-39
45"	45/65-45
49"	27.00-49
51"	33.00-51
	50/65-51

57"	52/80-57
	53.5/85-57
	55/80-57
	58/85-57
	60/80-57
63"	70/70-57

* ADDITIONAL SIZES ON REQUEST
**ALL COMBINATIONS OF SIZE/STYLE/MODEL ARE POSSIBLE



QUARRY

SPECIALLY ENGINEERED TO REDUCE WEIGHT WITH ADDED PROTECTION FOR SMALLER MACHINES.

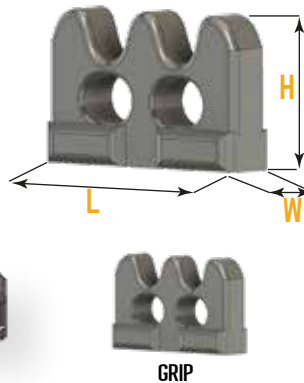
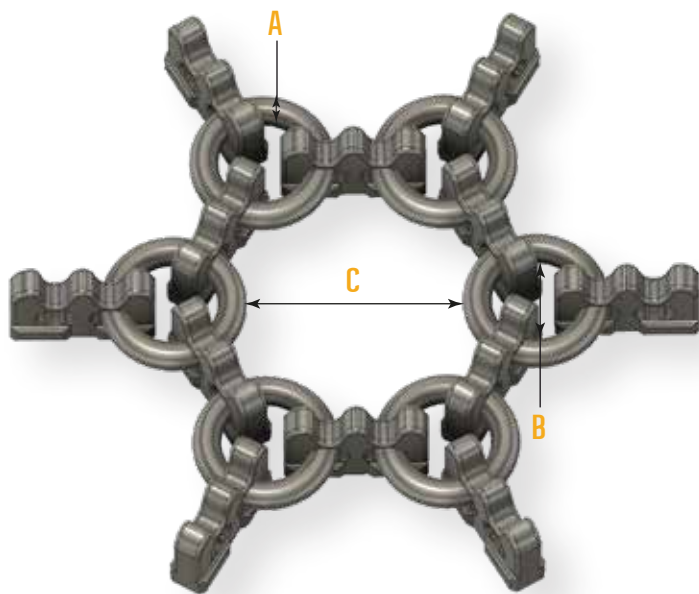
ROCK

DESIGNED WITH A WIDER FOOTPRINT, ALLOWING A TIGHTER MESH PATTERN FOR INCREASED PROTECTION. A PREMIUM DESIGN FOR SHARP OR ABRASIVE ROCKS IN SEVERE CONDITIONS.

MODEL	A	B	C	L	H	W (MM)
QUARRY	12	45	51	61	38	29
ROCK	13	45	52	76	52	41
ROCK	16	59	66	90	52	46
ROCK	18	66	76	96	63	49
ROCK	20	70	80	108	68	53
ROCK	22	72	82	120	72	57

4X4

100% PROTECTION



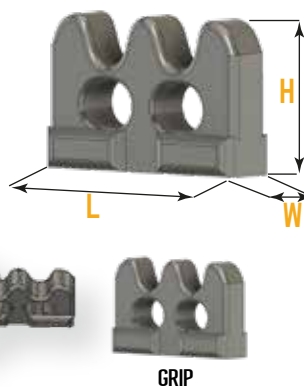
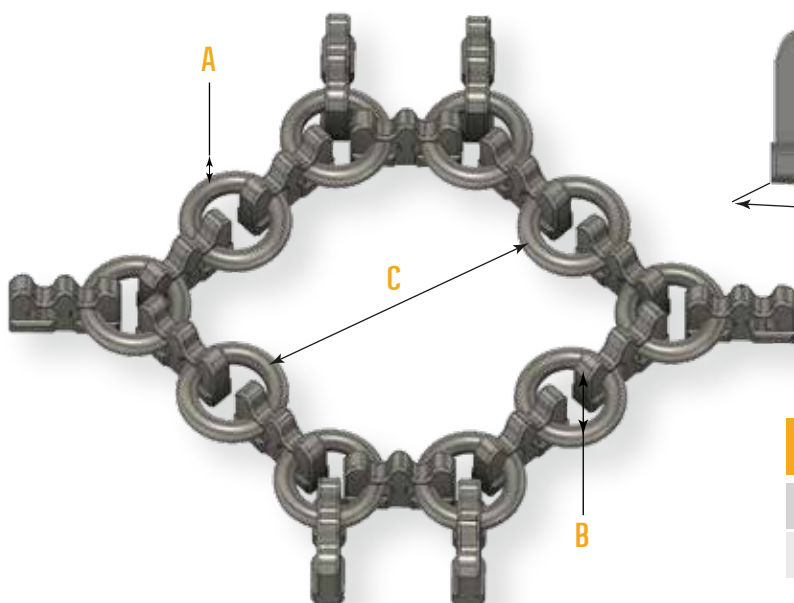
GRIP

A NEW DESIGN CALLED "UPSIDE-DOWN" (BOTTOM SIDE WIDER THAN THE UPPER SIDE). SPECIALLY ENGINEERED FOR MUD/SNOW APPLICATIONS, GRIP HAS 48% LARGER RING/LINK WEAR SURFACE, INCREASING RUNNING HOUR PERFORMANCE.

MODEL	A	B	C	L	H	W (MM)
GRIP	13	52	109	74	40	21
GRIP	16	63	132	82	50	23
GRIP	18	66	140	85	52	29
GRIP	20	70	185	102	73	32
GRIP	22	72	229	118	76	35

6X6

50% TRACTION & 50% PROTECTION



GRIP

A NEW DESIGN CALLED "UPSIDE-DOWN" (BOTTOM SIDE WIDER THAN THE UPPER SIDE). SPECIALLY ENGINEERED FOR MUD/SNOW APPLICATIONS, GRIP HAS 48% LARGER RING/LINK WEAR SURFACE, INCREASING RUNNING HOUR PERFORMANCE.

MODEL	A	B	C	L	H	W (MM)
GRIP	20	70	314	112	73	32
GRIP	22	72	375	118	76	35

10X10

100% TRACTION

RINGS & LINKS



SIZE	RING	ID
13MM	REPAIR Ring KIT	#8517
16MM	REPAIR Ring KIT	#8518
18MM	REPAIR Ring KIT	#8522
20MM	REPAIR Ring KIT	#5964
22MM	REPAIR Ring KIT	#5963

SOLD BY 20 PCS/BOX



SIZE	RING	ID
13MM	REPAIR Link KIT	#8515
16MM	REPAIR Link KIT	#8520
18MM	REPAIR Link KIT	#8521
20MM	REPAIR Link KIT	#5965
22MM	REPAIR Link KIT	#5415

SOLD BY 20 PCS/BOX



COILED SPRING PIN

SIZE	RING	ID
22MM	SPRING PIN	#10443
18,22MM	SPRING PIN LINK	#10444
16MM	SPRING PIN SIDEWALL	#10447
18MM	SPRING PIN SIDEWALL	#10446
20MM	SPRING PIN SIDEWALL	#10445
16MM	SPRING PIN	#10453
*18MM	SPRING PIN	#10452
*20MM	SPRING PIN	#10451
*22MM	SPRING PIN	#10450

SOLD BY 20 PCS/BOX
*SOLD BY 40 PCS/BOX



PIN BLOCK

SIZE	RING	ID
20MM	PIN BLOCK LINK	#10449
22MM	PIN BLOCK LINK	#10448

SOLD BY 20 PCS/BOX

TOOLS

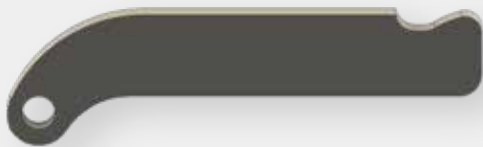


LINK PIN PUNCH 18-22MM #8525

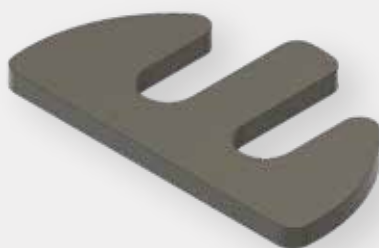
LINK PIN PUNCH 13-16MM #8526

RING PIN PUNCH 13-18MM #8527

RING PIN PUNCH 20-22MM #8528



L-SHAPE QUICK RELEASE #8532



SMART LOCKING PLATE #8533



COME-ALONG #8531



DRAG HOOK #8535

1 
PA, NY, NJ, MD

2 
PA, MD, WV, NC

3 
WV

4 
WV, KY

5 
IL, AL

6 
AR

7 
AR

8 
KS

9 
KS

10 
CA, BC


11 
MEXICO

12 
MEXICO

13 
QUEBEC

14 
OK


GROWING FOOTPRINT



TOUGH



15 
TX

18 
ID

21 
MN

16 
AZ

19 
UT

17 
NV

20 
OK

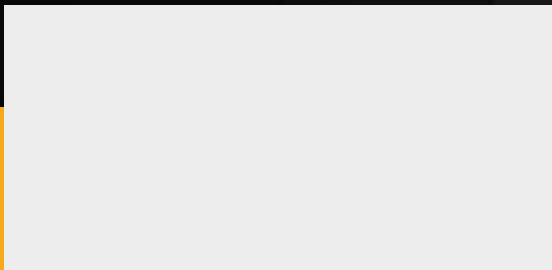

DESIGNED AND ENGINEERED
IN THE USA



TOUGH

TIRE PROTECTION CHAINS

OFFICIAL DEALER



INFO@OTRUSA.COM
WWW.OTRUSA.COM

EXCLUSIVE DISTRIBUTOR

OTRUSA.com