



TIRE PROTECTION CHAINS



DESIGNED AND ENGINEERED
IN THE USA



How is TOUGH different ?



Designed and Engineered
IN THE USA

Designed and Engineered in the US



Simplified & Safer Mounting Procedure



Part & Tool Kit

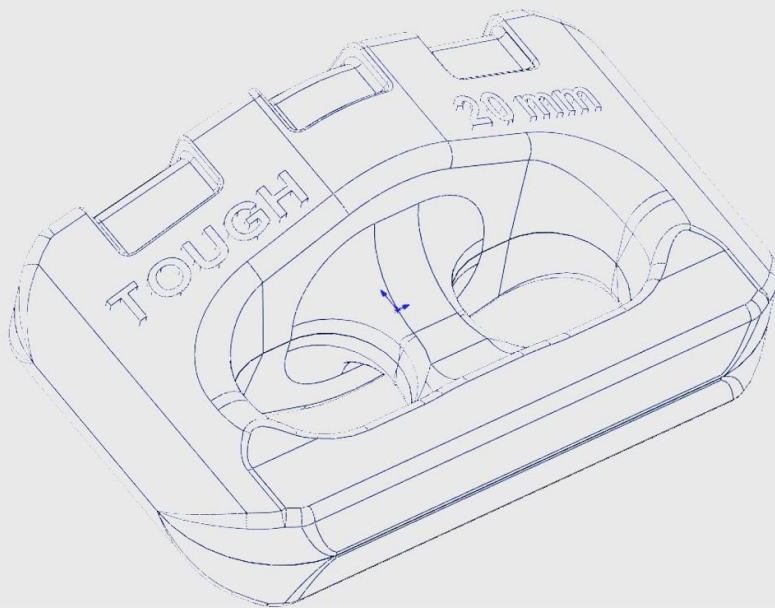


Cost/Hour



Distribution Strategy

Why TOUGH ?



- Design
- Engineering
- Innovation



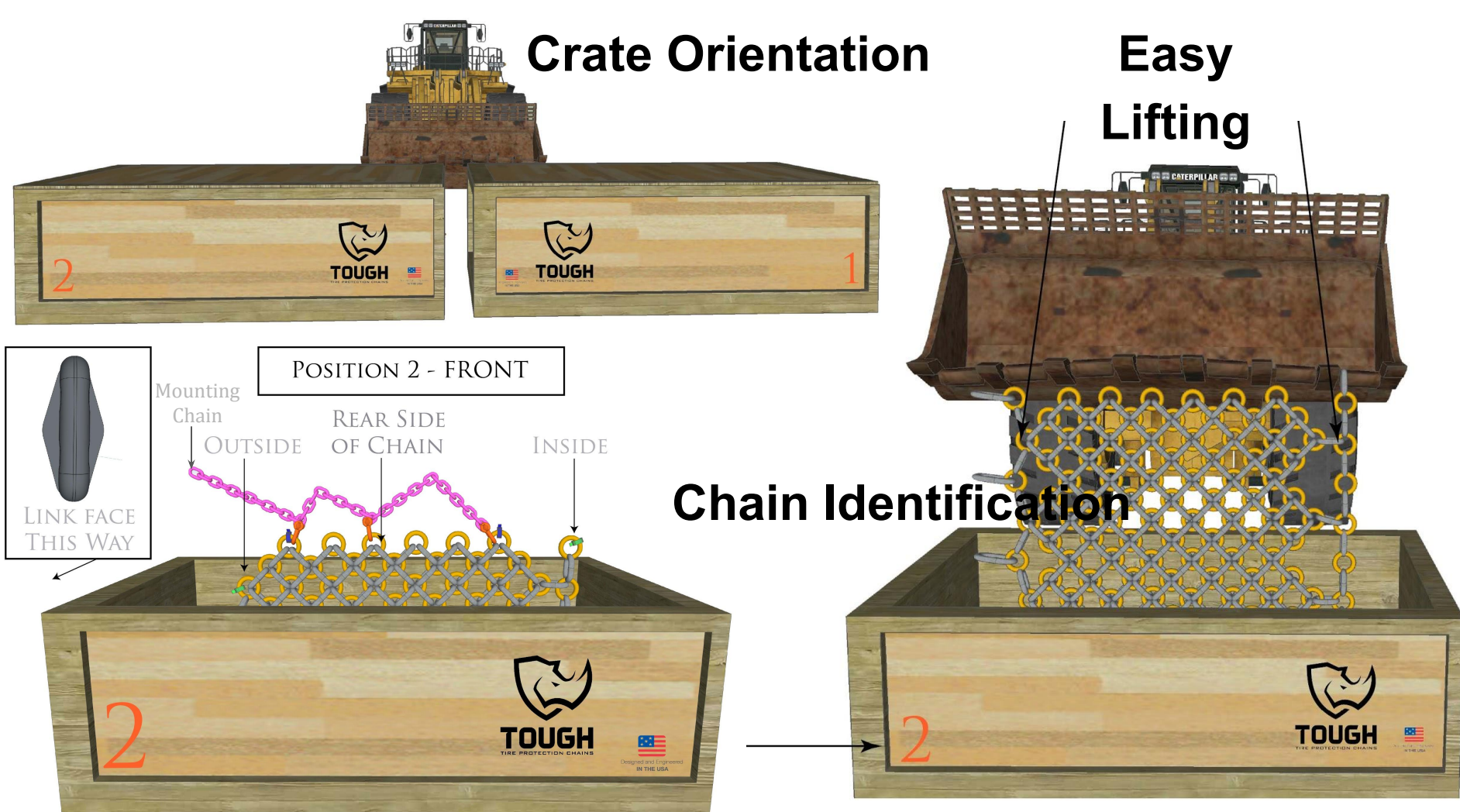
Simplified Mounting Procedure

- The Crates

Crate Orientation

Easy Lifting

Chain Identification



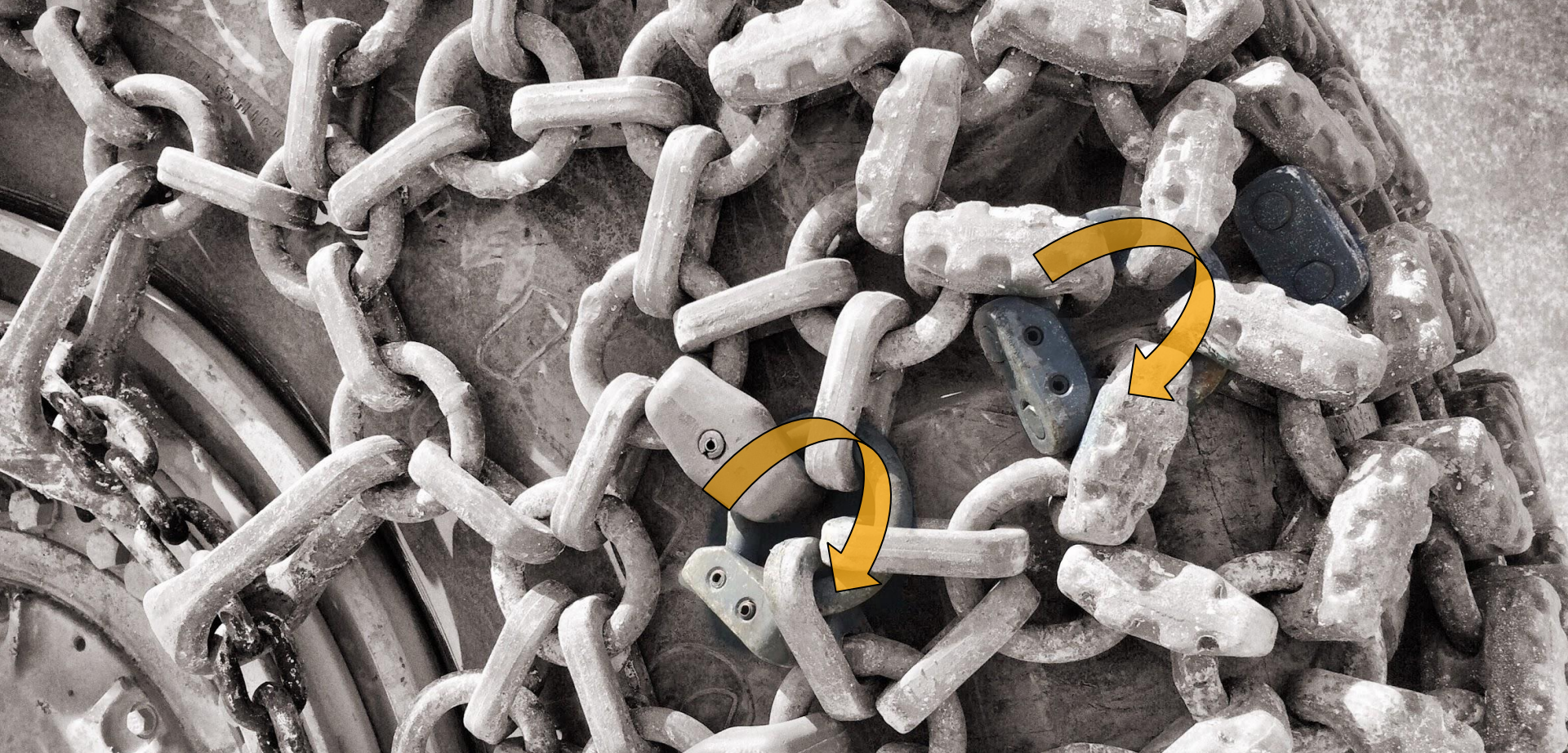


Lifting Ready



Simplified Mounting Procedure

- The Crates
- Link System & Color Code



Conventional Ring System

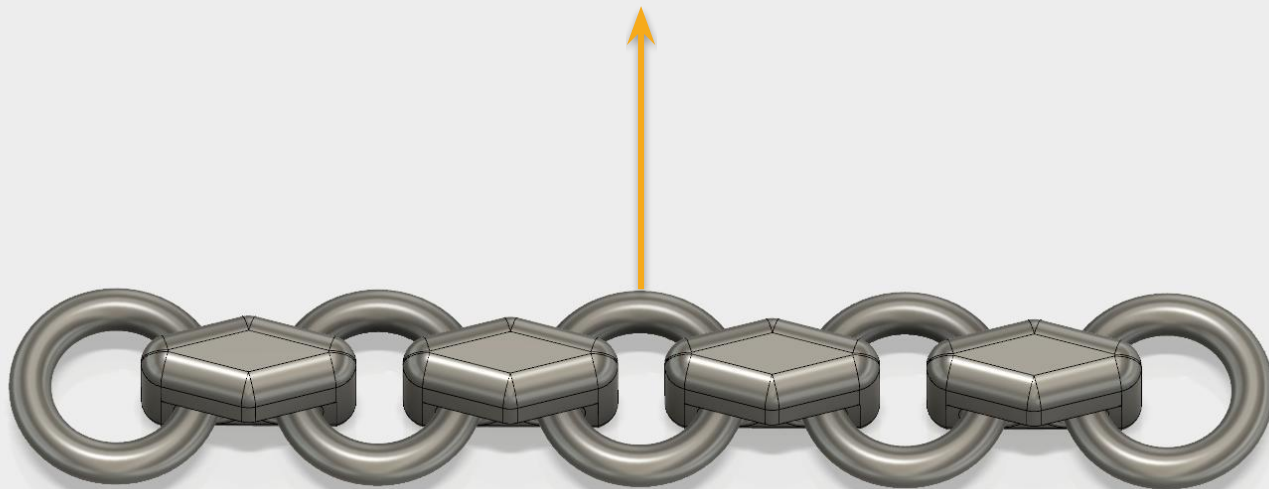


TOUGH Link System



Simplified Mounting Procedure

- The Crates
- Link System & Color Code
- Inner Side Shortcut



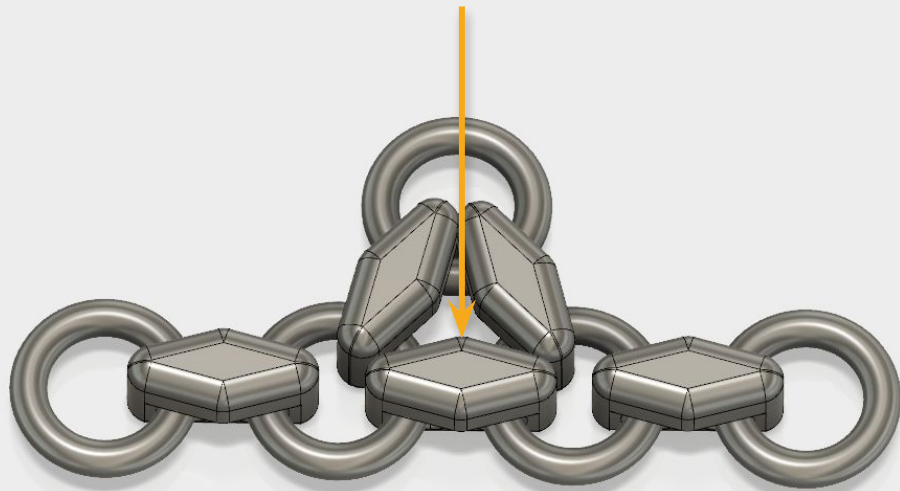
Conventional inside shortcut

Step 1 : Pull the chain up



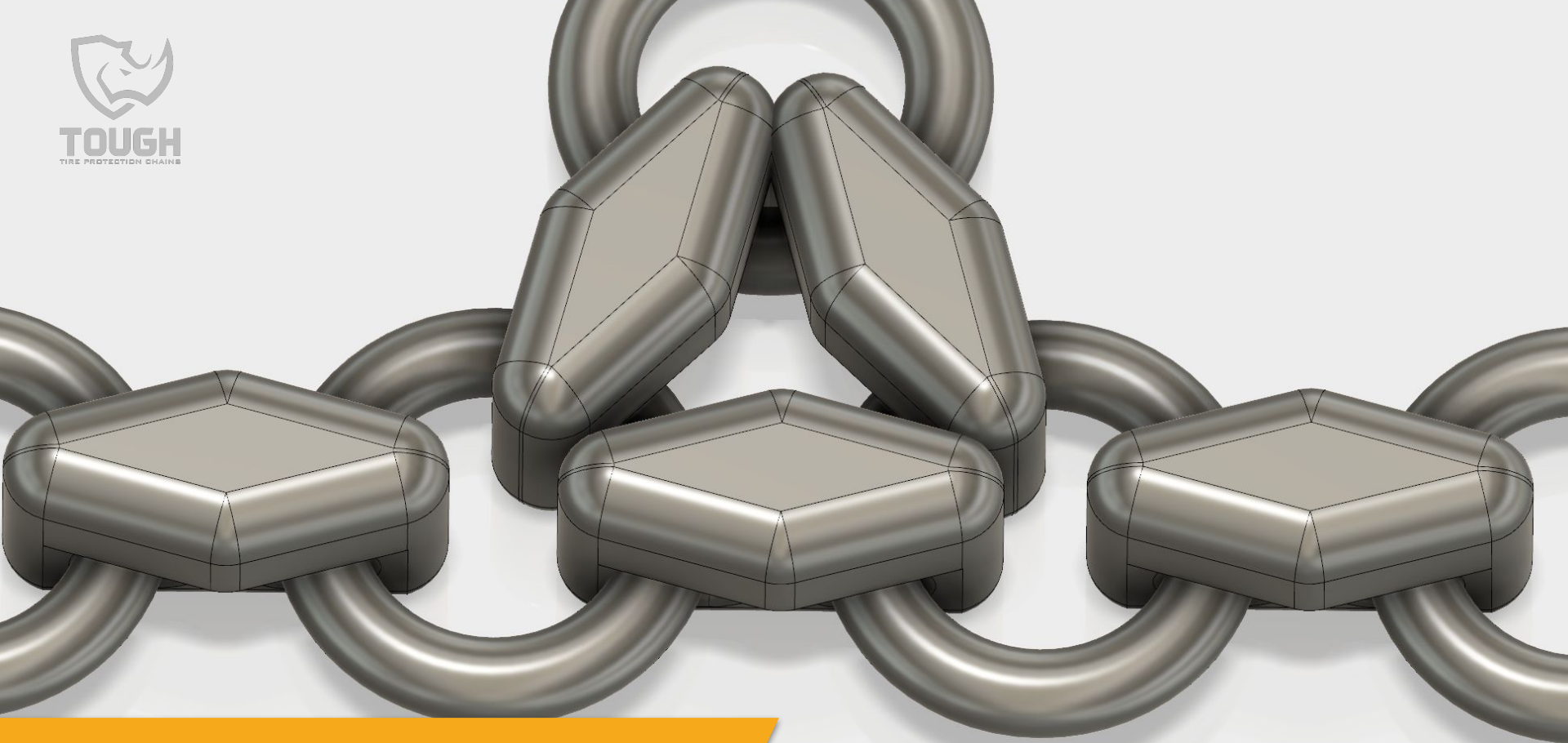
Conventional inside shortcut

Step 1 : Pull the chain up



Conventional inside shortcut

Step 2 : Insert a link



Conventional inside shortcut

Problem : Link is very hard to insert due to lack of room



TOUGH System

**STEP 1 : Tension the inner side.
Unpin the 2 open links**

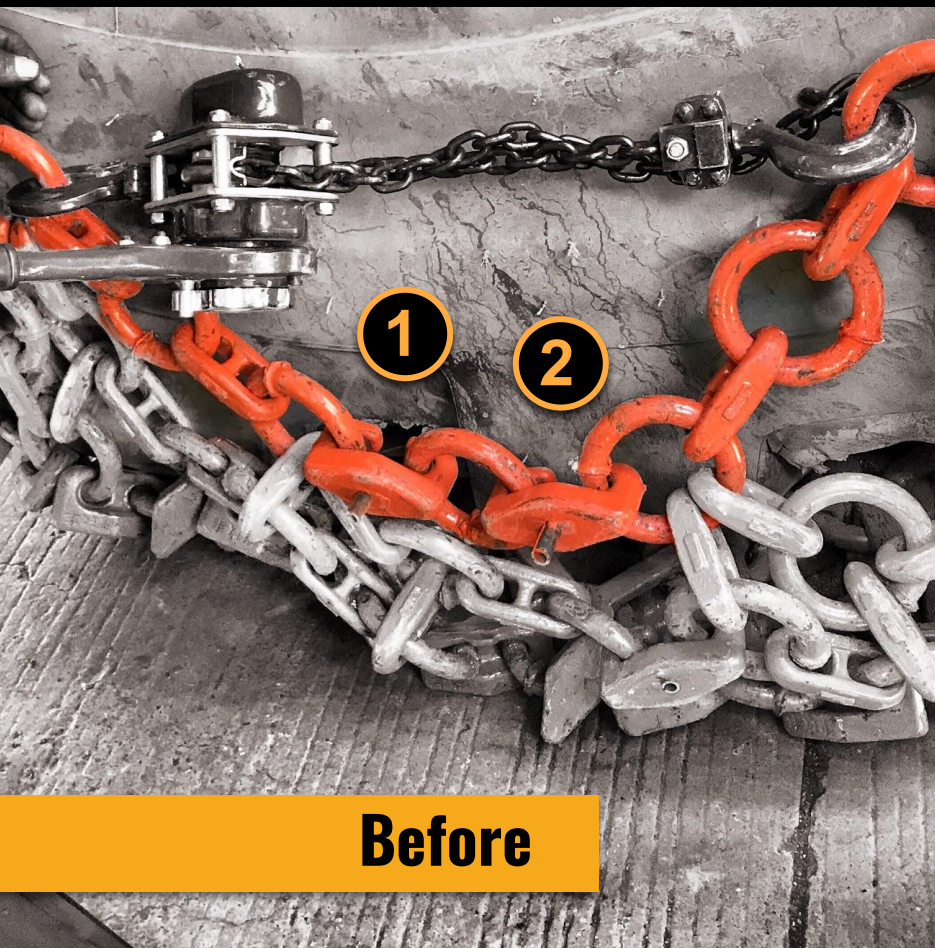


TOUGH
TIRE PROTECTION CHAINS



TOUGH System

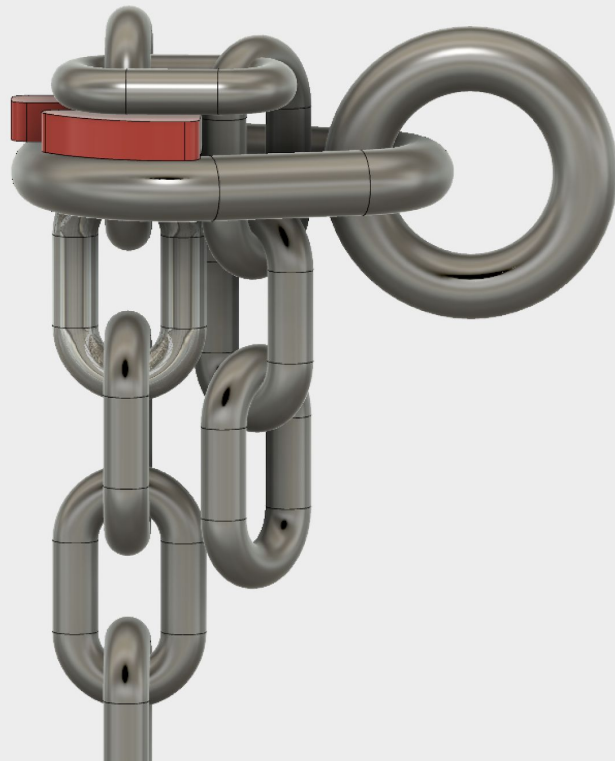
**STEP 2 : Take 1 link & ring off.
Release Tension & Tap the pin back**





Simplified Mounting Procedure

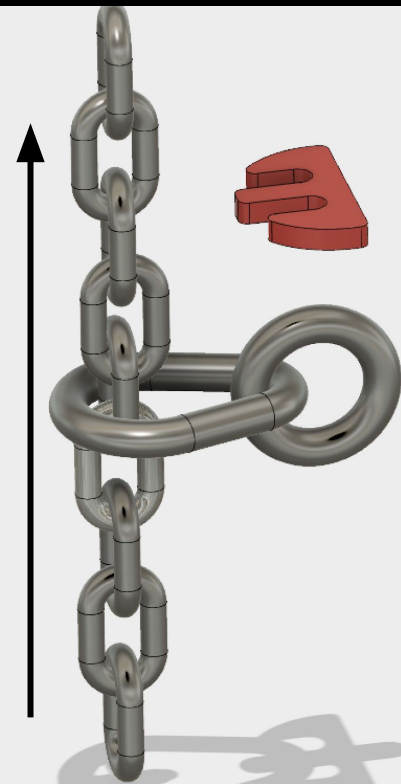
- The Crates
- Link System & Color Code
- Inner Side Shortcut
- Smart Locking Plate





Simplified Mounting Procedure

1. Tension the chain

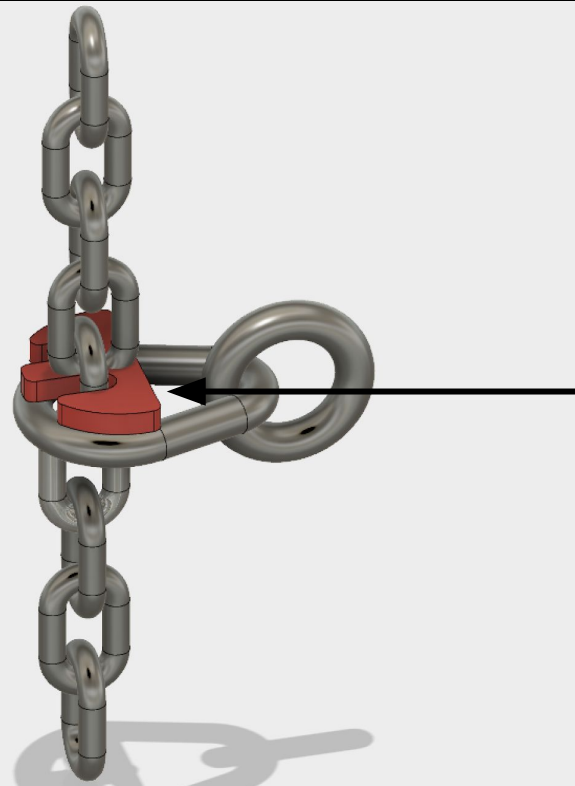




Simplified Mounting Procedure

1. Tension the chain

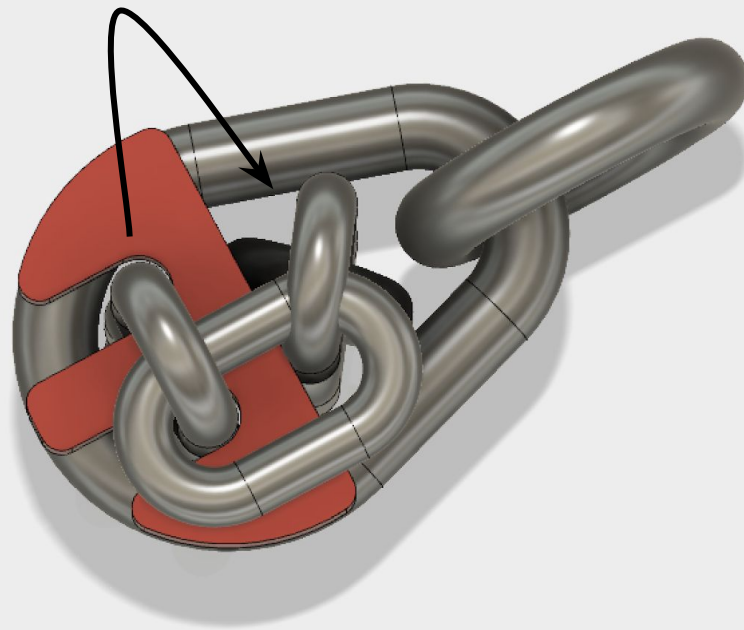
2. Insert the smart plate





Simplified Mounting Procedure

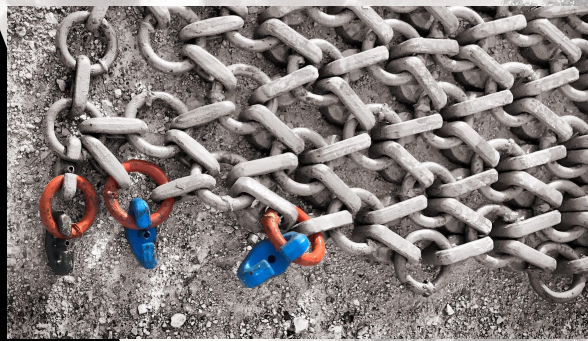
1. Tension the chain
2. Insert the smart plate
3. Loop back into the ring





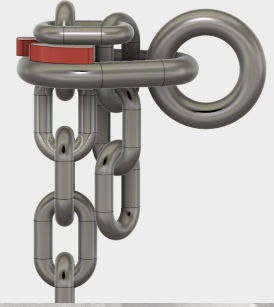
Smart Locking Plate

- Easier
- Faster
- Lighter
- Safer



Simplified Mounting Procedure

- The Crates
- Link System & color code
- Inner side shortcut
- Smart Locking plate



Part & Tools Kit

- 1 set for mounting
- 1 set for maintenance (40pcs/chain)
- 2 Lever
- 2 Hook Bar
- Set of D-Shackle
- 2 Small Pin Punch
- 2 Medium Pin Punch
- 2 Come along (chain Hoist)
- 2 Mounting Chains with quick release





6 FACTS ABOUT TOUGH CHAINS



80 PCS ADDITIONAL PARTS
ALWAYS INCLUDED FREE.
VALUE TO THE CUSTOMER
UP TO \$3,000.



TALLEST SIDEWALL
PROTECTION IN THE MARKET.
WE GOT YOU COVERED 100%.
"DO IT RIGHT OR DON'T DO IT."



BEST SERVICE PRACTICES.
NOT ONLY DO WE INSTALL BUT
WE ALSO TEACH YOUR TEAM TO
BECOME MORE EFFICIENT
IN A SAFER WAY.



WE KEEP IT DOWN FOR YOU.
TOUGH IS THE BEST
COST/HOUR IN THE MARKET.
FROM ACQUISITION COST
TO MAINTENANCE.
"A PROMISE IS A PROMISE."



NET REPLACEMENT SYSTEM (NRS)
ALL TOUGH CHAINS ARE NRS READY.
WHEN WORN, WE REPLACE ONLY
THE NET AND KEEP THE SIDEWALLS
TO SAVE AN EXTRA 30%.



TOUGH RUNNING HOURS
GUARANTEE. WE ALWAYS
MATCH OR EXCEED ANY
GUARANTEE OF COMPARABLE
CHAINS.

TOUGH GROWING FOOTPRINT

