



# TIRE PROTECTION CHAINS



2019 VOL.1  
CATALOG

EXCLUSIVE DISTRIBUTOR  
**OTRUSA**  
WWW.OTRUSA.COM  
INFO@OTRUSA.COM



DESIGNED AND ENGINEERED  
IN THE USA

TOLL FREE : +1-855-687-8721





**41.25/70-39 ROCK 4X4 20mm**  
**NORTH CAROLINA CAT992K**



**35/65-33 ROCK 4X4 18mm**  
**KANSAS JD944K**



**45/65-45 ROCK 4X4 22mm**  
**MEXICO CAT992K**



**70/70-57 ROCK 4X4 22mm**  
**MONGOLIA L2350**



**45/65-39 ROCK 4X4 22mm**  
**MARYLAND CAT990H**



**50/65-51 ROCK 4X4 22mm**  
**WEST VIRGINIA CAT993**



**45/65-39 ROCK 4X4 20mm**  
**PENNSYLVANIA CAT990II**



**23.5-25 ROCK 4X4 13mm**  
**TEXAS JCB456HT**

# CONTENTS

	PAGE
<b>SMART MARKING</b>	4
<b>SMART PACKAGING</b>	5
<b>3 STYLES 3 APPLICATIONS</b>	6
<b>4X4 MESH 100% PROTECTION</b>	7
<b>6X6 MESH 50% TRACTION &amp; 50% PROTECTION</b>	8
<b>10X10 MESH 100% TRACTION</b>	9
<b>SPARE PARTS</b>	10
<b>TOOLS</b>	11

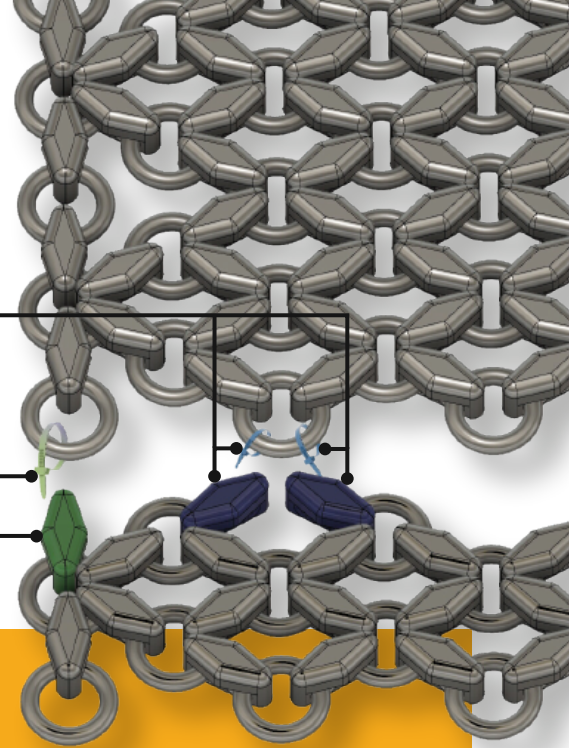


# SMART MARKING

FASTER IDENTIFICATION  
EASIER MOUNTING

BLUE ZIP TIE  
TO  
BLUE LINK

GREEN ZIP TIE  
TO  
GREEN LINK



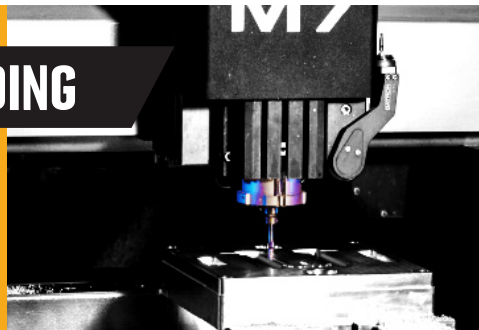
## FORGING & WELDING



- FORGING HAMMER MACHINERY
- HEAT TREATMENT FOR BETTER WEAR
- HIGH-END WELDING TECHNOLOGY

## CNC MOLDING

IN-HOUSE CNC  
MOLD CAPABILITY



## QUALITY CONTROL

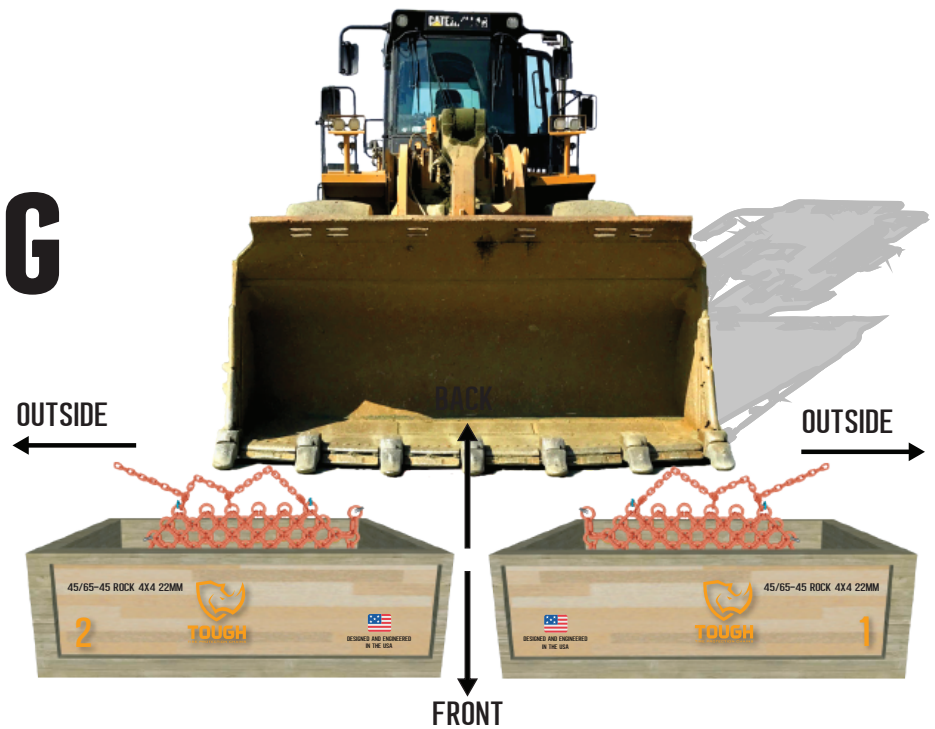
- EVERY CHAIN IS TESTED
- TENSILE STRENGTH
  - CORE AND SURFACE HARDNESS



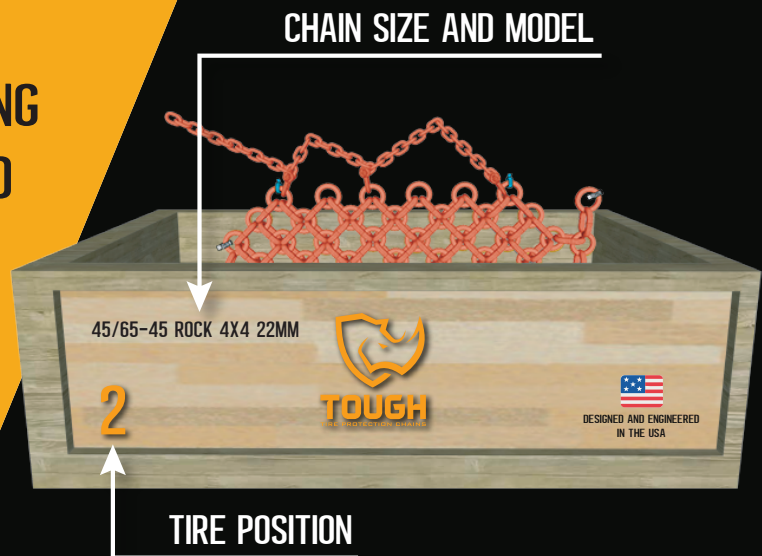
## SMART PACKAGING



# SMART PACKAGING



- CRATE IDENTIFIED BY TIRE POSITION
- CHAIN READY FOR LIFTING
- TENSION CHAIN MOUNTED
- CLEAR INSTRUCTIONS FOR QUICK LAYOUT



- 1 BOX TOOLS
- 1 BOX MOUNTING PARTS
- 1 BOX SPARE PARTS

# 3 STYLES APPLICATIONS

FORGED LINKS

WELDED RINGS

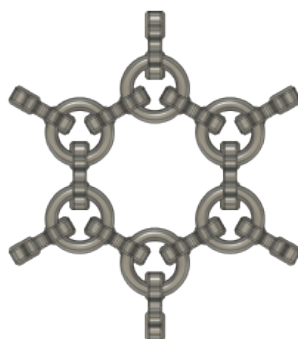
## 4X4

100% PROTECTION



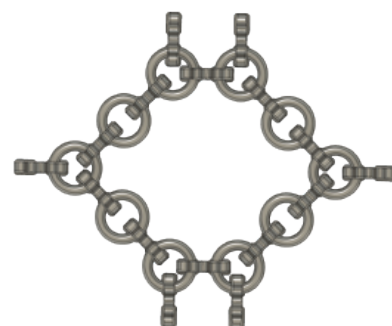
## 6X6

50% PROTECTION 50% TRACTION



## 10X10

100% TRACTION



## SIZE

## STEEL GRADE SELECTION FOR EACH APPLICATION

<b>25"</b>	17.5-25
	20.5-25
	23.5-25
	26.5-25
	29.5-25
<hr/>	
<b>29"</b>	29.5-29
<hr/>	
<b>33"</b>	35/65-33

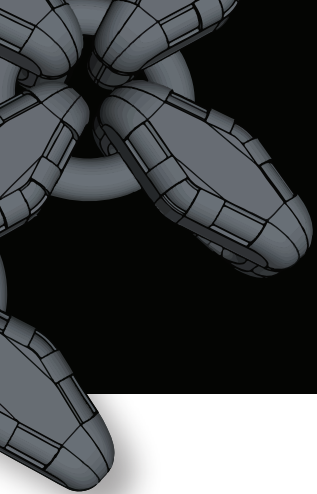
<b>39"</b>	40/65-39
	41.25/70-39
	45/65-39
<hr/>	
<b>45"</b>	45/65-45
<hr/>	
<b>49"</b>	27.00-49
<hr/>	
<b>51"</b>	33.00-51
	50/65-51

<b>57"</b>	52/80-57
	53.5/85-57
	55/80-57
	58/85-57
	60/80-57
	70/70-57
<hr/>	
<b>63"</b>	53/80-63

\* ADDITIONAL SIZES ON REQUEST

\*\* ALL COMBINATIONS OF SIZE/STYLE/MODEL ARE POSSIBLE

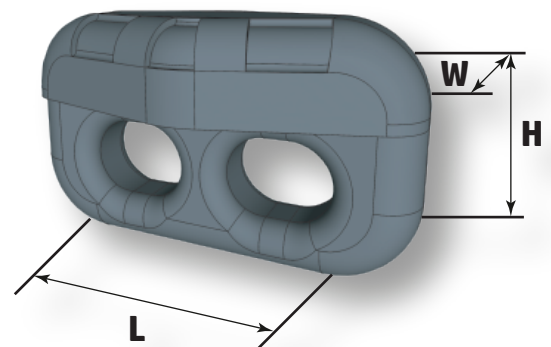
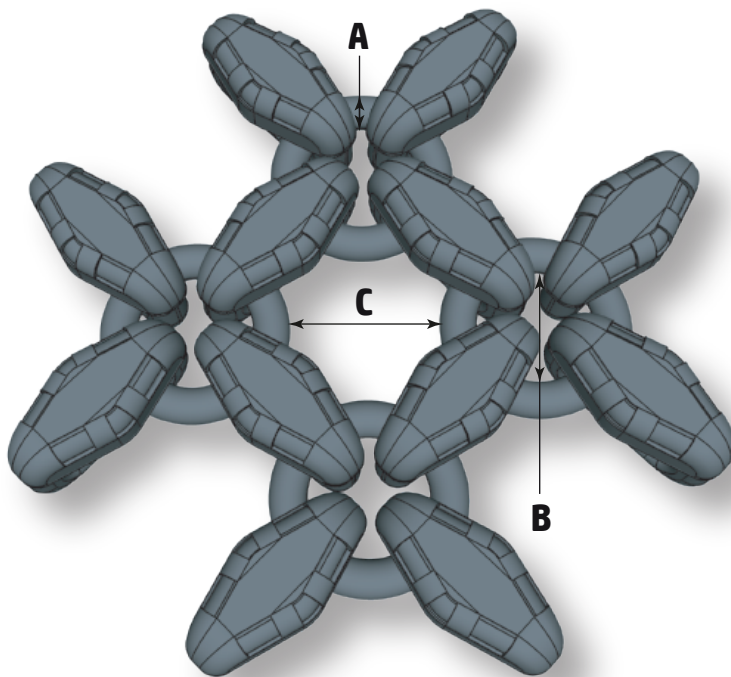




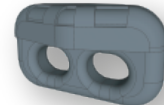
# 4X4

MESH

## 100% PROTECTION



QUARRY



ROCK

### QUARRY

SPECIALLY ENGINEERED TO REDUCE WEIGHT WITH ADDED PROTECTION FOR SMALLER MACHINES.

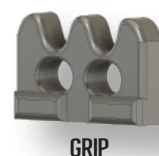
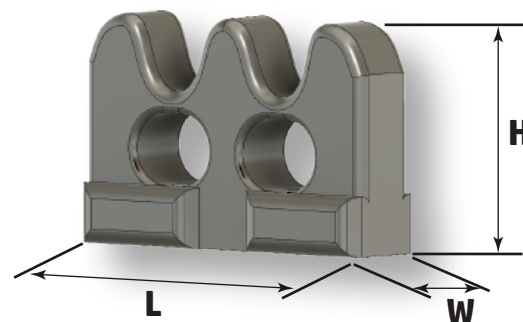
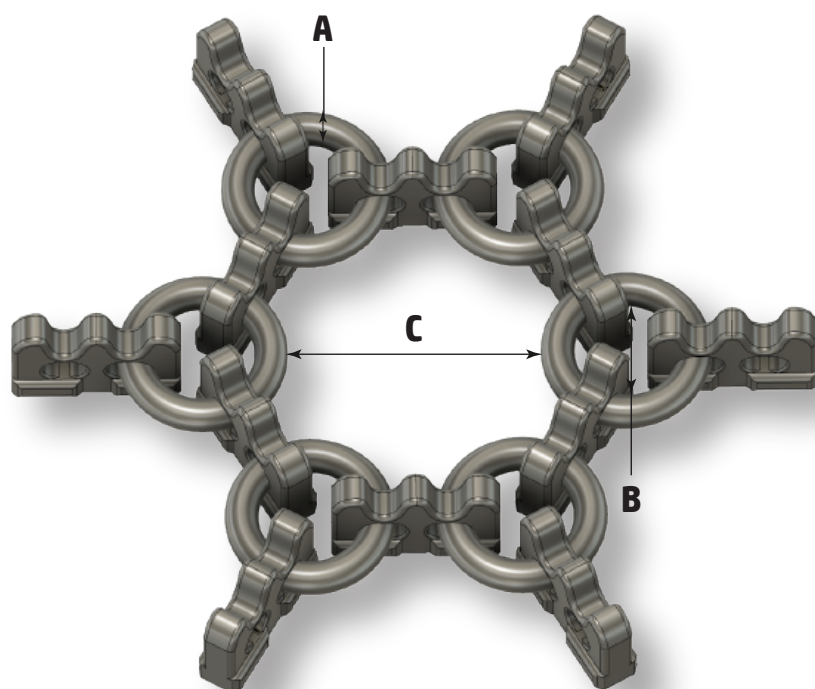
### ROCK

DESIGNED WITH A WIDER FOOTPRINT, ALLOWING A TIGHTER MESH PATTERN FOR INCREASED PROTECTION. A PREMIUM DESIGN FOR SHARP OR ABRASIVE ROCKS IN SEVERE CONDITIONS.

MODEL	A	B	C	L	H	W (mm)
QUARRY	12	45	51	61	38	29
ROCK	13	45	52	76	52	41
ROCK	16	59	66	90	52	46
ROCK	18	66	76	96	63	49
ROCK	20	70	80	108	68	53
ROCK	22	72	82	120	72	57

# 6X6

## 50% TRACTION & 50% PROTECTION



MODEL	A	B	C	L	H	W (mm)
GRIP	13	52	109	74	40	21
GRIP	16	63	132	82	50	23
GRIP	18	66	140	85	52	29
GRIP	20	70	185	102	73	32
GRIP	22	72	229	118	76	35

### GRIP

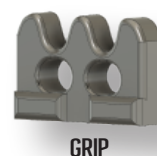
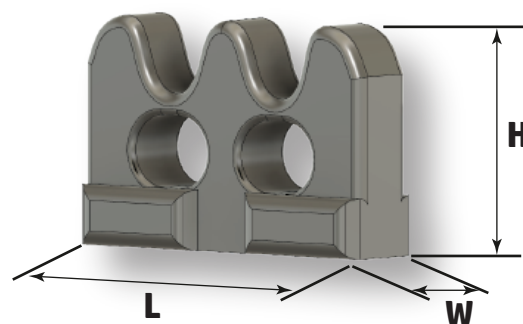
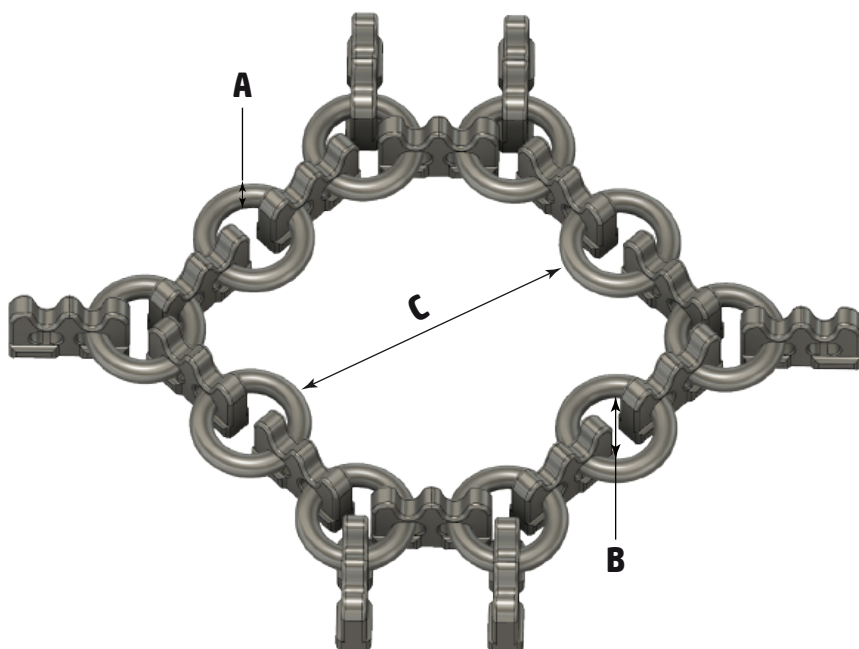
A NEW DESIGN FOR 2018, ALSO CALLED "UPSIDE-DOWN" (BOTTOM SIDE WIDER THAN THE UPPER SIDE). SPECIALLY ENGINEERED FOR MUD/SNOW APPLICATIONS, GRIP HAS 48% LARGER RING/LINK WEAR SURFACE, INCREASING RUNNING HOUR PERFORMANCE.



# 10X10

MESH

## 100% TRACTION



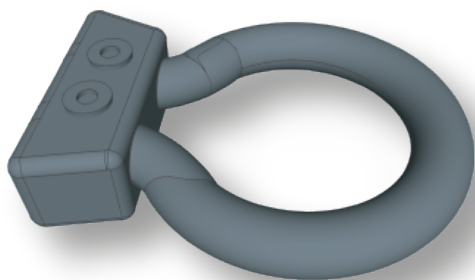
### GRIP

A NEW DESIGN FOR 2018, ALSO CALLED "UPSIDE-DOWN" (BOTTOM SIDE WIDER THAN THE UPPER SIDE). SPECIALLY ENGINEERED FOR MUD/SNOW APPLICATIONS, GRIP HAS 48% LARGER RING/LINK WEAR SURFACE, INCREASING RUNNING HOUR PERFORMANCE.

MODEL	A	B	C	L	H	W (mm)
GRIP	20	70	314	112	73	32
GRIP	22	72	375	118	76	35

# SPARE PARTS

## RINGS & LINKS



**RING**

**13 mm**

REPAIR RING KIT

#8517

SOLD BY 20PCS CARTON

**16 mm**

REPAIR RING KIT

#8518

SOLD BY 20PCS CARTON

**18 mm**

REPAIR RING KIT

#8522

SOLD BY 20PCS CARTON

**20 mm**

REPAIR RING KIT

#5964

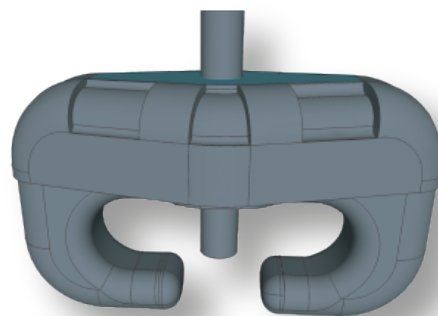
SOLD BY 20PCS CARTON

**22 mm**

REPAIR RING KIT

#5963

SOLD BY 20PCS CARTON



**LINK**

**13 mm**

REPAIR LINK KIT

#8519

SOLD BY 20PCS CARTON

**16 mm**

REPAIR LINK KIT

#8520

SOLD BY 20PCS CARTON

**18 mm**

REPAIR LINK KIT

#8521

SOLD BY 20PCS CARTON

**20 mm**

REPAIR LINK KIT

#5965

SOLD BY 20PCS CARTON

**22 mm**

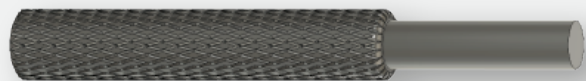
REPAIR LINK KIT

#5415

SOLD BY 20PCS CARTON



# TOOLS

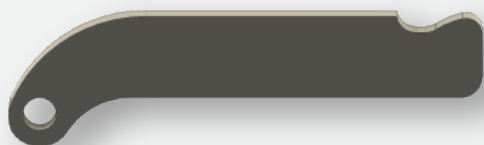


**LINK PIN PUNCH 18-22mm #8525**

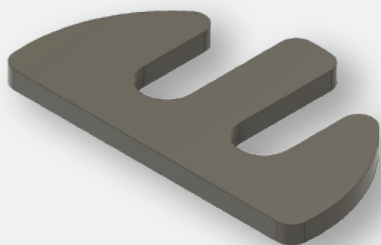
**LINK PIN PUNCH 13-16mm #8526**

**RING PIN PUNCH 13-18mm #8527**

**RING PIN PUNCH 20-22mm #8528**



**L-SHAPE QUICK RELEASE #8532**



**SMART LOCKING PLATE #8533**



**COME-ALONG #8531**



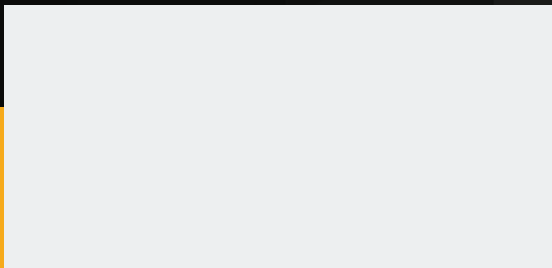
**DRAG HOOK #8535**



# TOUGH

TIRE PROTECTION CHAINS

OFFICIAL DEALER



INFO@OTRUSA.COM  
WWW.OTRUSA.COM

EXCLUSIVE DISTRIBUTOR  
**OTRUSA**.com