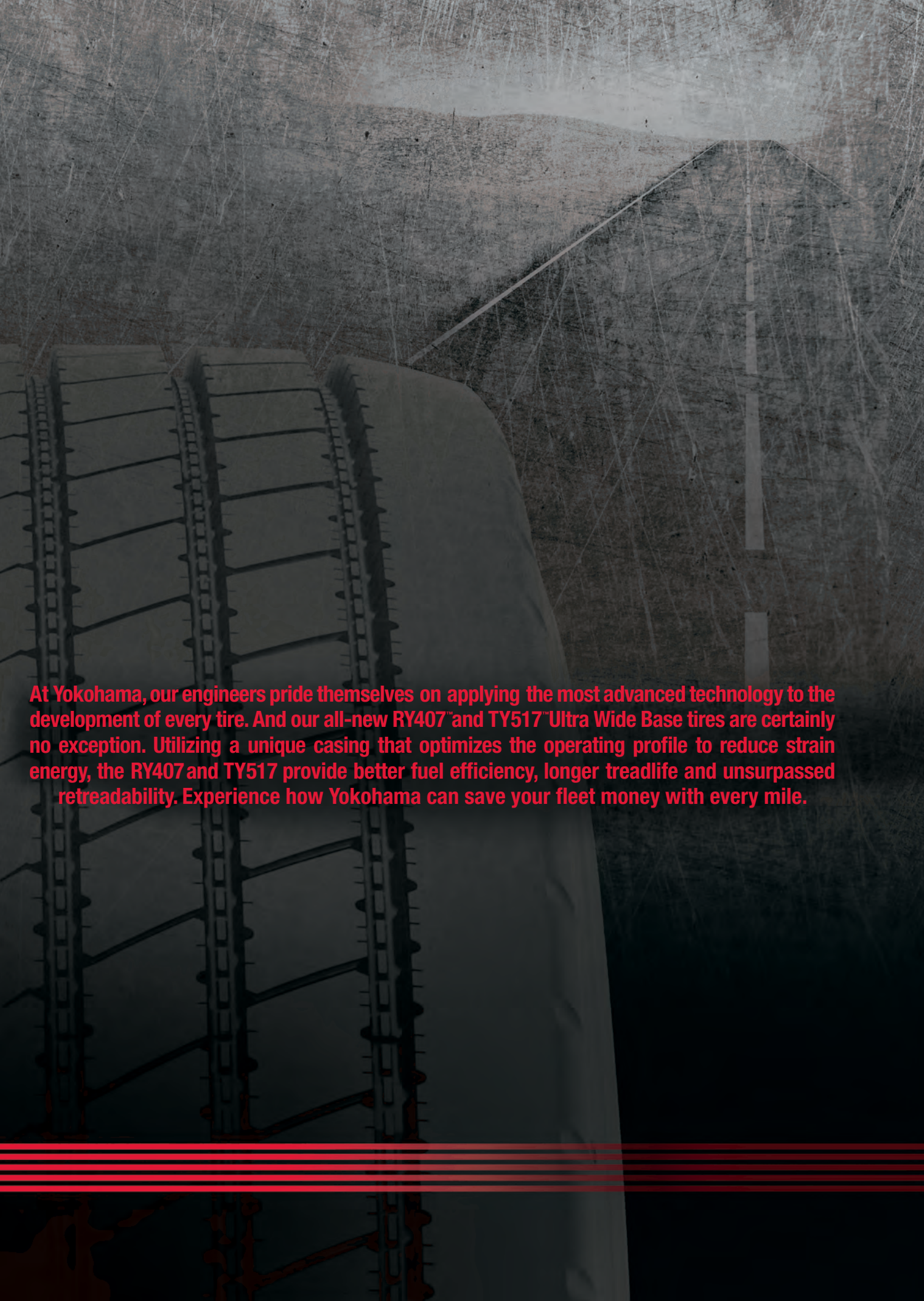


ULTRA WIDE BASE TIRES

RY407™ TY517™



 **YOKOHAMA®**



At Yokohama, our engineers pride themselves on applying the most advanced technology to the development of every tire. And our all-new RY407™ and TY517™ Ultra Wide Base tires are certainly no exception. Utilizing a unique casing that optimizes the operating profile to reduce strain energy, the RY407 and TY517 provide better fuel efficiency, longer treadlife and unsurpassed retreadability. Experience how Yokohama can save your fleet money with every mile.

RY407™ and TY517™
have reducing your
tire costs
down to a science.



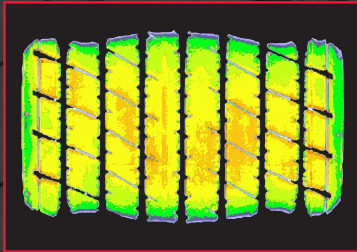
TRAILER TIRE
SmartWay Verified

DRIVE TIRE
SmartWay Verified

A LONG-TERM SOLUTION

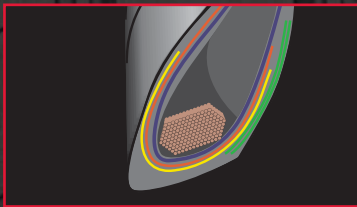
It can be easy to forget how much your tires affect your fleet's bottom line. That's why Yokohama's all-new Ultra Wide Base trailer and drive tires address the financial benefits of tire Longevity, Efficiency, Availability and Dependability. One more example of Yokohama technology building some of the finest commercial tires on the market.

LONGEVITY **Say goodbye to irregular wear.**



Zero Degrees, More Miles

The RY407™ and TY517™ each contain a jointless, zero degree belt engineered specifically to provide even pressure across the contact patch. This allows for even weight distribution and vastly increased treadlife ensuring the most even footprint possible.



The Hexagonal Bead

Bead area modifications made to improve overall durability under higher operating load conditions:

- Optimized bead filler provides increased lateral stiffness to enhance stability.
- Double nylon chafer provides added protection during mounting and dismounting.

EFFICIENCY **Reduced rolling resistance leads to increased fuel economy.**

Stay Cool – and Efficient

The RY407 / TY517 casing's advanced rubber compound was designed using our exclusive Lo Temp, Hi Torque mixing method, to produce a molecular structure with better carbon distribution and low dioxide rate. This process results in reduced heat buildup in the tread area, thus reducing rolling resistance and allowing for deeper tread depths.

CONVENTIONAL MULTI-STEP MIXING PROCESS

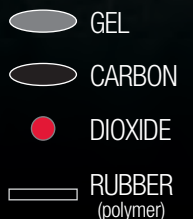


- Irregular rubber molecule length
- Unstable carbon dispersion
- Large presence of dioxides

YOKOHAMA SINGLE-STEP MIXING PROCESS



- Uniform rubber molecule length
- Evenly dispersed carbon
- Low dioxide presence



FOR LONG-HAUL SAVINGS.

AVAILABILITY You'll find Yokohama tires just about everywhere you go.

When Your Fleet Needs Us, We're There

No other commercial tire brand is more widely distributed than Yokohama. In fact, you can find Yokohama products at thousands of points of sale throughout the U.S., and our strategic alliance with dealers, truck stops and travel plazas is second to none.



Plus, Yokohama Emergency Service (YES) is available 24/7 for all of your fleet needs.



Yokohama partners with professional dealers who understand the importance of efficient and dependable service. Every commercial dealer in our network is put through a rigorous certification process to ensure that you get the quality of service you've come to expect from Yokohama.

DEPENDABILITY Uniquely advanced casing technology for uniquely advanced dependability.

A Case of Superior Casing

The scientifically advanced casing in the RY407 and TY517 prevents casing growth and reduces tire strain via:



- Durable Five belt package
- Zero degree mid belt
- Strain resistant shoulder
- Super strong bead bundle

Predictability Leads to Dependability

Yokohama has perfected the science of predicting casing growth using finite element analysis. Because optimizing the running profile of a tire before it hits the road greatly increases the dependability of the casing.

Six Years of Guaranteed Retreadability

The RY407 and TY517 are built to be tough. In fact, we're so confident in our casing durability, we back them with an industry leading warranty — 6 years and unlimited retreads.

Tire Size	Part No.	Ply Rating L.R.	Weight (LBS)	Rim Size		Inflated Dimensions		Tread Depth (1/32")	Loaded Dimensions		RPM	Maximum Load Capacity At Cold Inflation Pressure		Max Speed
				Measure	ALT	Overall Width (Inch)	Overall Diameter (Inch)		Section Width (Inch)	Static Radius (Inch)		Single LB/PSI	Dual LB/PSI	
RY407														
445/50R22.5	40761	20L	186.70	14.00	--	17.3	39.6	16	18.3	18.3	530	10200@120		75
TY517														
445/50R22.5	51761	20L	204.70	14.00	--	17.5	40.2	24	18.6	18.6	522	10200@120		75



Yokohama Tire Corporation

Corporate Headquarters
P.O. Box 4550
Fullerton, CA 92834-4550
800.423.4544 714.870.3800

Commercial Customer Service

For Dealer Orders Call: 800.423.4544 x. 2889
Dealer Fax Orders Call: 800.455.9656

Consumer Affairs

800.722.9888
yokohamatire.com

