

## ENGINEERED FOR LONGER LIFE AND EXCEPTIONAL PERFORMANCE.

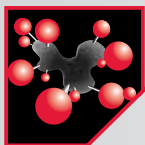
The new 101ZL Spec-2™ represents our next generation long-haul steer tire. It features an advanced tread compound, improved casing design and even better retreadability, helping to make it one of the most durable long-haul tires on the market.

### LASTING PERFORMANCE FLEETS RELY ON



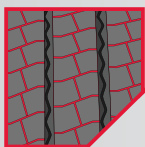
#### Wide Belt Package

Delivers a more uniform footprint for long, even wear and greater retreadability.



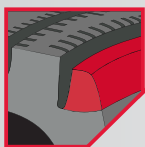
#### High-Elongation Tread Compound

Is specifically designed to create a tread that is much more resilient and less susceptible to irregular wear, helping to extend treadlife and provide exceptional durability.



#### Contact Pressure Equalizer Sipes

Optimize rib contact pressure to combat uneven wear and improve wet handling / braking.



#### Stress Equalizer Ribs

Ensure even contact pressure along the shoulders to combat step down wear.

### FEATURES FOR REDUCED FUEL-CONSUMPTION



#### Zenvironment Casing

Works with our latest compound to help distribute contact pressure more evenly across the tread surface. This results in more even treadwear and longer treadlife.

### MAXIMUM DURABILITY FOR UNMATCHED RELIABILITY



#### Highly Reinforced Bead

Constructed with increased bead filler gauge and a longer steel chafer. This bead package is stronger, more durable and allows for less heat buildup in the bead area, ensuring maximum retreadability.

### IT'S IN OUR DNA.



Our innovative business philosophy, SmartSolution®, is our commitment to meeting the most essential demands of today's fleets: Longevity, Efficiency, Availability and Dependability.



Zenvironment™ engineering reduces fuel consumption, waste and pollution by utilizing advanced construction and manufacturing.

### SmartWay® Verified

Our 101ZL Spec-2 is one of many Yokohama tires designed to meet SmartWay's stringent low rolling resistance criteria.



### SIZES AND SPECIFICATIONS

TIRE SIZE	PART NUMBER	PLY RATING (L.R.)	TIRE WEIGHT (LBS)	RIM SIZE (INCH)		INFLATED DIMENSIONS		TREAD DEPTH (1/32")	LOADED DIMENSIONS		RPM	MAX LOAD CAPACITY AT COLD INFLATION PRESSURE				MAX SPEED (MPH)
				MEASURE	ALT	OVERALL WIDTH (INCH)	OVERALL DIAMETER (INCH)		SECTION WIDTH (INCH)	STATIC RADIUS (INCH)		LB/PSI SINGLE	LB/PSI DUAL	KG/KPA SINGLE	KG/KPA DUAL	
295/75R22.5	71125	14G	117.7	9.00	8.25	11.5	40.0	18	12.5	18.7	522	6175@110	5675@110	2800@760	2575@760	75
295/75R22.5	71121	16H	119.0	9.00	8.25	11.5	40.0	18	12.5	18.7	522	7160@120	6610@120	3250@830	3000@830	75
11R22.5	71126	14G	119.9	8.25	7.50	11.0	41.3	18	12.1	19.3	505	6175@105	5840@105	2800@720	2650@720	75
11R22.5	71122	16H	120.1	8.25	7.50	11.0	41.3	18	12.1	19.3	505	6610@120	6005@120	3000@830	2725@830	75
285/75R24.5	71128	14G	122.4	8.25	NONE	11.1	41.3	18	12.1	19.3	505	6175@110	5675@110	2800@760	2575@760	75
11R24.5	71127	14G	129.4	8.25	7.50	11.1	43.3	18	12.3	20.2	481	6610@105	6005@105	3000@720	2725@720	75
11R24.5	71124	16H	128.1	8.25	7.50	11.1	43.3	18	12.3	20.2	481	7160@120	6610@120	3250@830	3000@830	75

Yokohama tires are subject to an ongoing development process. Yokohama Tire Corporation reserves the right to change product specifications at any time without notice or obligation. Not all models and sizes available in all locations.

### THE YOKOHAMA DIFFERENCE

When you do business with us, you get more than just a world-class tire engineered by some of the industry's best. You also get a partner, committed to delivering efficient products and solutions to help your business run more smoothly and more profitably. Our industry-leading support network truly makes Yokohama the SmartSolution.



#### SMARTSOLUTION CERTIFIED PROGRAM

Each of the dealers that make up our expansive nationwide service network is selected and certified to ensure they're ready to provide the solutions you need, fast.



#### YOKOHAMA EMERGENCY SERVICE (YES)

Offering nationwide emergency service we're focused on keeping your cargo on the move—24/7/365.



#### YOKOHAMA IS A SMARTWAY TRANSPORT PARTNER

Working with the SmartWay program we're committed to accelerating the availability, adoption and market penetration of advanced fuel efficient technologies and operational practices in the freight supply chain helping you save fuel, lower costs and reduce adverse environmental impact.

**Yokohama Tire Corporation** | 800.423.4544 | yokohamatruck.com

Commercial Customer Service: ext. 2889

Credit Department: ext. 3977

Consumer Affairs: ext. 2880

Commercial Customer Service Dealer Order Fax: 800.455.9656